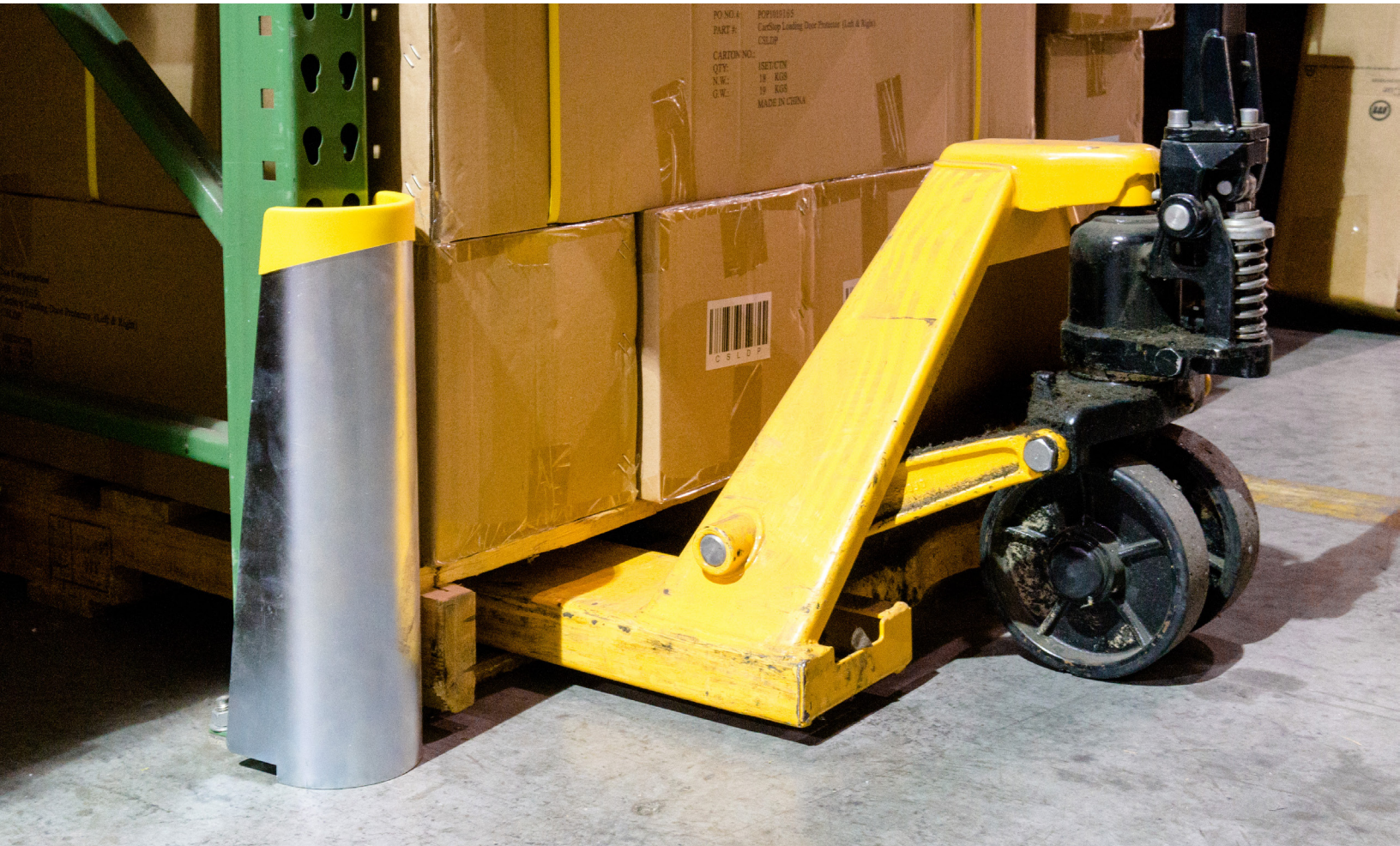


# Shock-Absorbing Rack Guard



## The biggest shock you'll never notice.

Hit an ordinary rack guard hard enough and the concrete will give up its hold. We engineered ours smarter—with a built in industrial-grade shock-absorber that takes stronger hits. That means your rack, floor and equipment are safer—so your business can move faster.

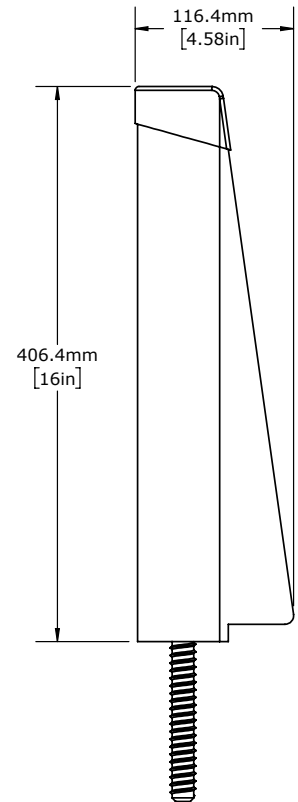
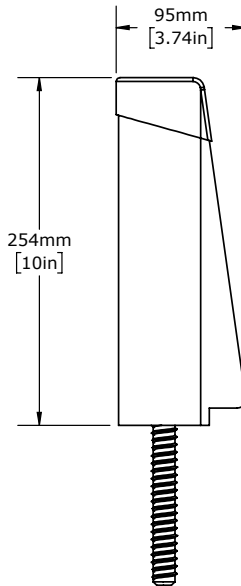
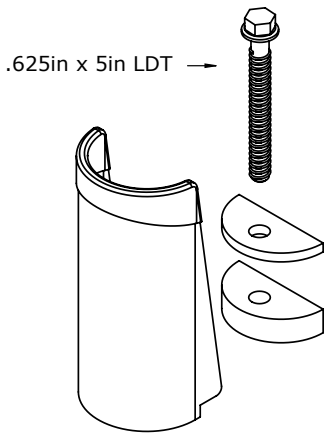
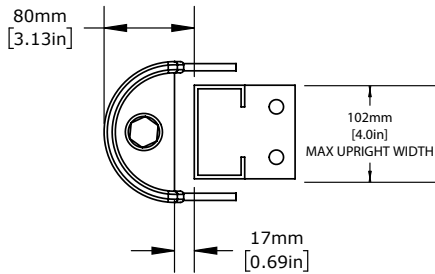
**Shock-Absorbing** Protect the integrity of rack columns from accidental impacts

**Half-Moon Profile** Produces a smooth, seamless finish that deflects impacts

**Zero Maintenance** Protect against rust and corrosion



# Shock-Absorbing Rack Guard



## 10"/250 mm Rack Guard Materials:

Zinc plated steel 10"/250 mm Shock-Absorbing Rack Guard, anchor kit

## 16"/400 mm Rack Guard Materials:

Zinc plated steel 16"/400 mm Shock-Absorbing Rack Guard, anchor kit



Zinc plating finish will not scratch off or rust leaving it looking like new.

The 10" Shock Absorbing Rack Guard can withstand an impact of 6,694 lb [29.8 kN] and recover to the upright position.



This is equivalent to a 9,000 lb [4082 kg] vehicle at 2.7 mph [4.4 km/h]

Report #s 439402-5, 441217-5 | For more information go to [mccue.com](http://mccue.com)



**McCue Corporation**  
Peabody, MA 01960, USA  
+1 (800) 800 8503  
[customer@care@mccue.com](mailto:customer@care@mccue.com)

**McCue UK & Europe**  
Milton Keynes, United Kingdom  
+44 (0)1908 365 511  
[uksales@mccue.com](mailto:uksales@mccue.com)

**McCue Asia**  
迈客(厦门)有限公司  
Xiamen, Fujian, China  
+86-592-2200790

[mccue.com](http://mccue.com)

